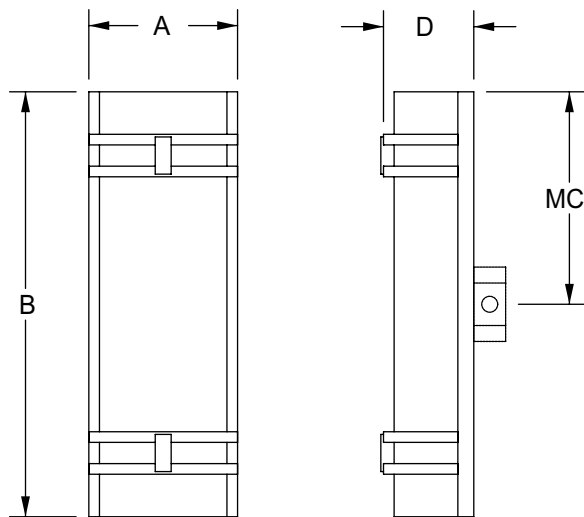


# ANDREWS SERIES

## WALL FIXTURE OW517



**Fixture Number:**

**OW517-16**

7" A x 16" B x 4" D  
MC 8"

**OW517-20**

7" A x 20" B x 4" D  
MC 10"

**Lamping:**

**OW517-16**

**F** 2-18W QD  
**FF** 2-26W QD

**OW517-20**

**F** 2-32W TT  
**FF** 2-39W BX

**Voltage:**

**1** 120v  
**2** 277v

**Lens Options:**

**WA** White Acrylic  
**WS** White Alabaster Acrylic  
**FA** Beige Alabaster Acrylic  
**GR** Grey Alabaster Acrylic  
**CA** Custom Acrylic (see pg 398)  
**HPA** Hand Painted Acrylic

**Finish Options:**

**AB** Antique Brass  
**PB** Polished Brass  
**BB** Brushed Brass  
**BA** Brushed Aluminum  
**SN** Satin Nickel  
**PC** Polished Chrome  
**PT** Painted (see pg 396)  
**CPF** Custom Painted Finish

**Options:**

**REM** Remote Emergency Ballast  
**DM** Dimming Ballast  
**FUS** Fusing  
**SBA** Sandblasted Acrylic

**Notes:**

- 1.** Custom sizes and finishes available upon request.
- 2.** All fluorescent fixtures available in 120v or 277v.
- 3.** Incandescent 120v only.
- 4.** Lamps not included.
- 5.** For lamp or ballast specifications see pages 400-403 for technical information.
- 6.** Camman reserves the right to make design changes without prior notice.

WET LOCATION

**Project:**

**Quantity:**      **Type:**

**Modifications:**

**Specification:**

(Fixture Number)	(Lamping)	(Voltage)	(Lens)	(Finish)	(Options)