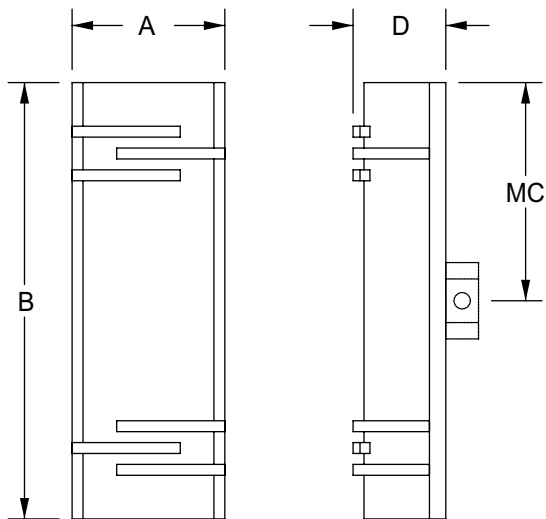


# ANDERSON SERIES

## WALL FIXTURE OW519



### Fixture Number:

#### OW519-16

7" A x 16" B x 4" D  
MC 8"

#### OW519-20

7" A x 20" B x 4" D  
MC 10"

### Lamping:

#### OW519-16

**F** 2-18W QD  
**FF** 2-26W QD

#### OW519-20

**F** 2-32W TT  
**FF** 2-39W BX

### Voltage:

**1** 120v  
**2** 277v

### Lens Options:

**WA** White Acrylic  
**WS** White Alabaster Acrylic  
**FA** Beige Alabaster Acrylic  
**GR** Grey Alabaster Acrylic  
**CA** Custom Acrylic (see pg 398)  
**HPA** Hand Painted Acrylic

### Finish Options:

**AB** Antique Brass  
**PB** Polished Brass  
**BB** Brushed Brass  
**BA** Brushed Aluminum  
**SN** Satin Nickel  
**PC** Polished Chrome  
**PT** Painted (see pg 396)  
**CPF** Custom Painted Finish

### Options:

**REM** Remote Emergency Ballast  
**DM** Dimming Ballast  
**FUS** Fusing  
**SBA** Sandblasted Acrylic

### Notes:

1. Custom sizes and finishes available upon request.
2. All fluorescent fixtures available in 120v or 277v.
3. Incandescent 120v only.
4. Lamps not included.
5. For lamp or ballast specifications see pages 400-403 for technical information.
6. Camman reserves the right to make design changes without prior notice.

WET LOCATION

Project:

Quantity:      Type:

Modifications:

### Specification:

(Fixture Number)

(Lamping)

(Voltage)

(Lens)

(Finish)

(Options)